

Outer Dowsing Offshore Wind

Plans

2.6 Crown Land Plans Onshore

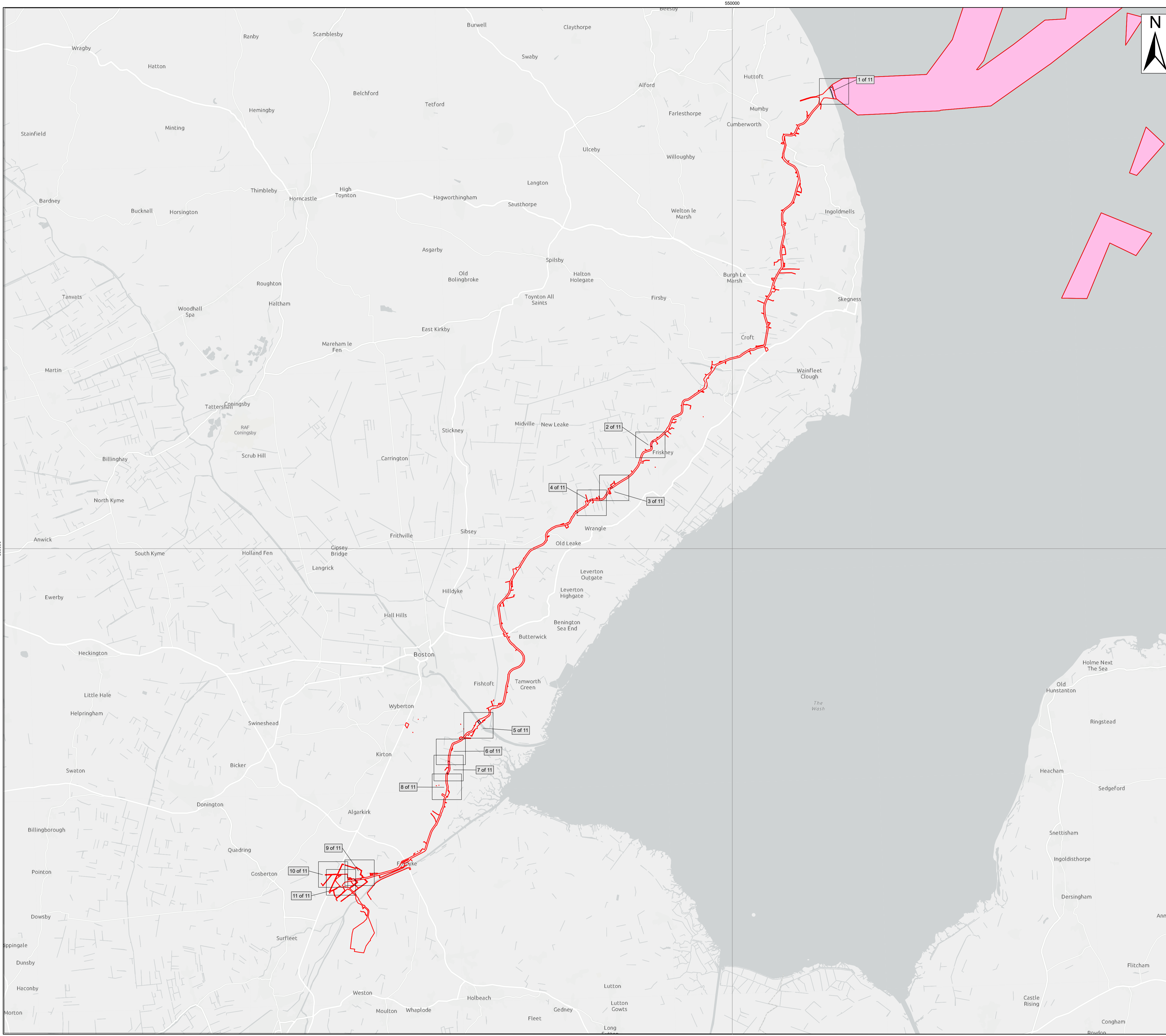
Date: July 2024

Document Reference: 2.6

Pursuant to APFP Regulation: 5(2)(n)

Rev: 2.0

Company:	Outer Dowsing Offshore Wind			Asset:	Whole Asset	
Project:	Whole Wind Farm			Sub Project/Package:	Whole Asset	
Document Title or Description:	2.6 Crown Land Plans Onshore					
Internal Document Number:	PP1-ODOW-DEV-CS-PLN-0016_02			3 rd Party Doc No (If applicable):	N/A	
Rev No.	Date	Status / Reason for Issue	Author	Checked by	Reviewed by	Approved by
1.0	March 2024	DCO Application	Dalcour Maclaren	Shepherd & Wedderburn	Outer Dowsing	Outer Dowsing
2.0	July 2024	Response to Section 51 Advice	Dalcour Maclaren	Shepherd & Wedderburn	Outer Dowsing	Outer Dowsing



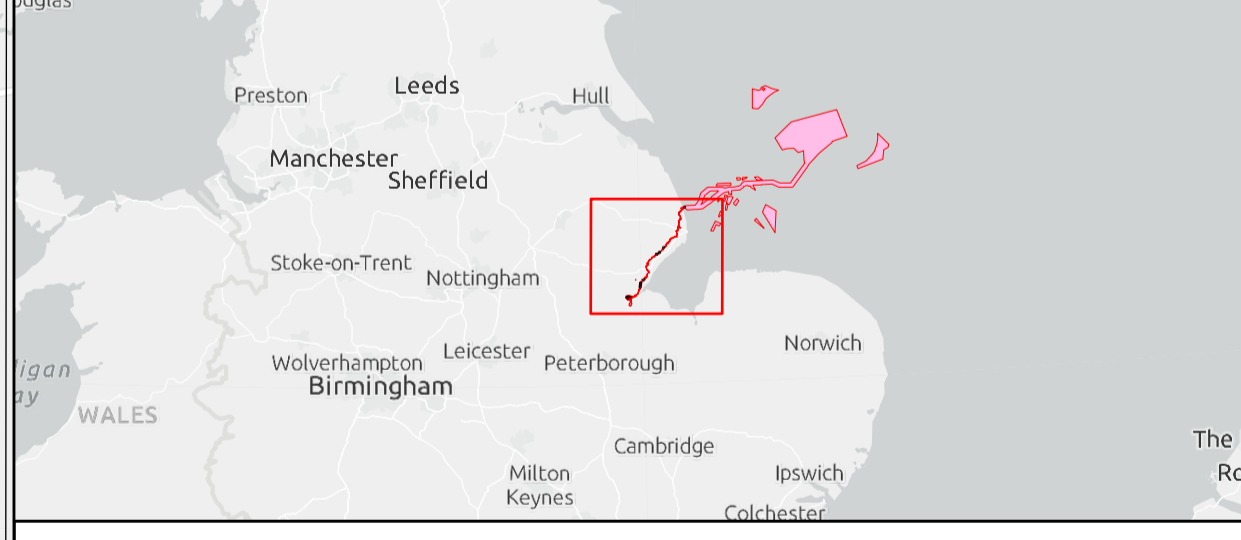
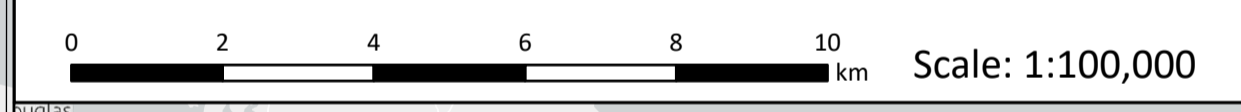
Legend

- Order Limits
- The King's Most Excellent Majesty In Right Of His Crown

Source:
 Contains Esri Community Maps Contributors, Esri UK, Esri, TomTom, Garmin, Foursquare, GeoTechnologies, Inc, METI/NASA, USGS, Esri UK, Esri, TomTom, Garmin, Foursquare, GeoTechnologies, Inc, METI/NASA, USGS, Esri UK, Esri, TomTom, Garmin, FAO, NOAA, USGS.
 Based upon the Ordnance Survey Map with the sanction of the controller of HM Stationery Office. Crown Copyright Reserved. © OS Licence No. 0100031673

Notes:	Status: Pre-examination Update
---------------	--

Onshore Coordinate System
 Datum: OSGB 1936
 Spheroid: Airy 1830
 Projection: British National Grid
 Central Meridian: 2 W
 Vertical Reference: Newlyn



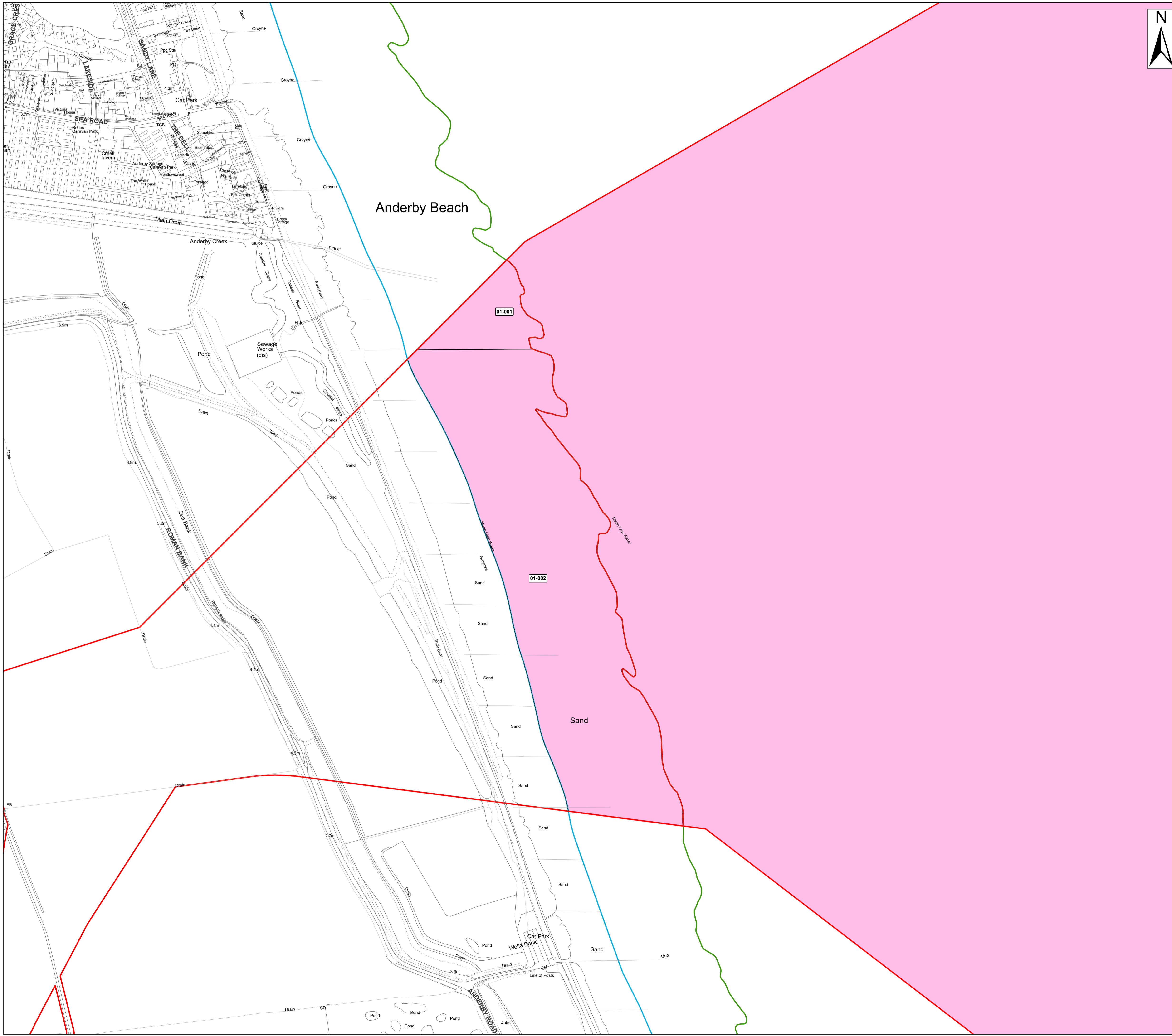
Outer Dowsing Offshore Wind 2.6 Crown Land Plans Onshore V2 DCO Application

Drawing No: PP1-ODOW-DEV-CS-MAP-0006_02

Drawing: Overview Sheet			Page Size: A1		
Rev No:	Date	Description	Drawn	Checked	Approved
1.0	March 2024	DCO Application Version	RT	DM/ODOW	ODOW
2.0	July 2024	Response to Section 51 Advice	RT	DM/ODOW	ODOW



This document may only be used for the purpose for which it was commissioned and in accordance with the terms of engagement for that commission. Unauthorised use of this document in any form whatsoever is prohibited.

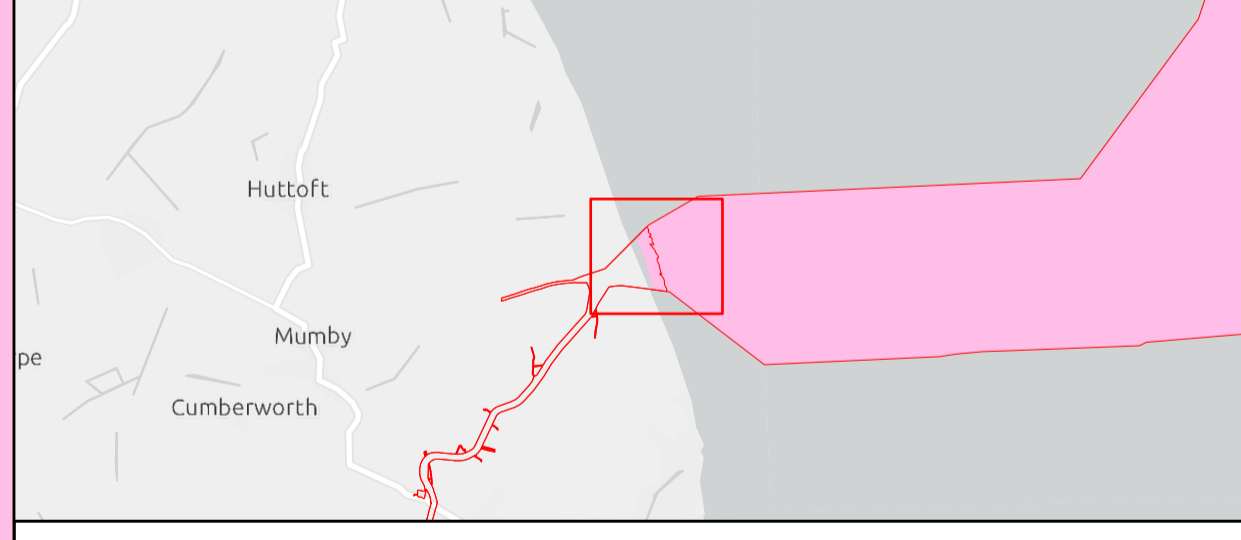


- Legend**
- Order Limits
 - The King's Most Excellent Majesty In Right Of His Crown
 - Mean High Water (Springs)
 - Mean Low Water (Springs)

Source:
 Contains Esri Community Maps Contributors, Esri UK, Esri, TomTom, Garmin, Foursquare, GeoTechnologies, Inc, METI/NASA, USGS, Esri UK, Esri, TomTom, Garmin, Foursquare, GeoTechnologies, Inc, METI/NASA, USGS.
 Based upon the Ordnance Survey Map with the sanction of the controller of HM Stationery Office. Crown Copyright Reserved. © OS Licence No. 0100031673

Notes:	Status: Pre-examination Update
--------	--------------------------------------

Onshore Coordinate System
 Datum: OSGB 1936
 Spheroid: Airy 1830
 Projection: British National Grid
 Central Meridian: 2 W
 Vertical Reference: Newlyn



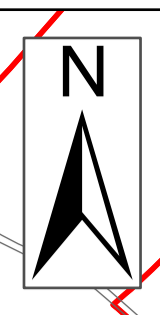
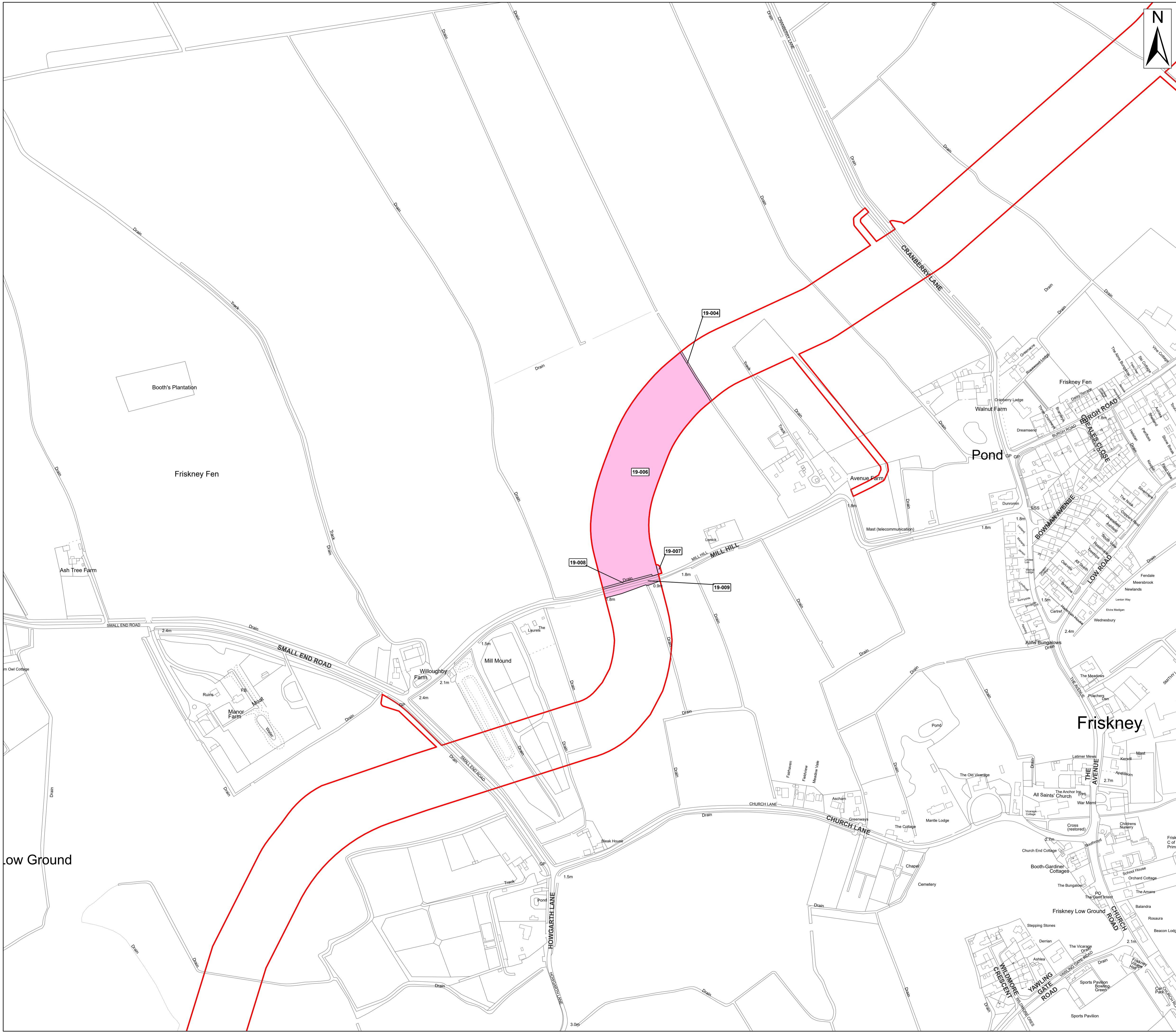
Outer Dowsing Offshore Wind 2.6 Crown Land Plans Onshore V2 DCO Application

Drawing No: PP1-ODOW-DEV-CS-MAP-0006_02

Drawing: 1 of 11			Page Size: A1		
Rev No:	Date	Description	Drawn	Checked	Approved
1.0	March 2024	DCO Application Version	RT	DM/ODOW	ODOW
2.0	July 2024	Response to Section 51 Advice	RT	DM/ODOW	ODOW



This document may only be used for the purpose for which it was commissioned and in accordance with the terms of engagement for that commission. Unauthorised use of this document in any form whatsoever is prohibited.

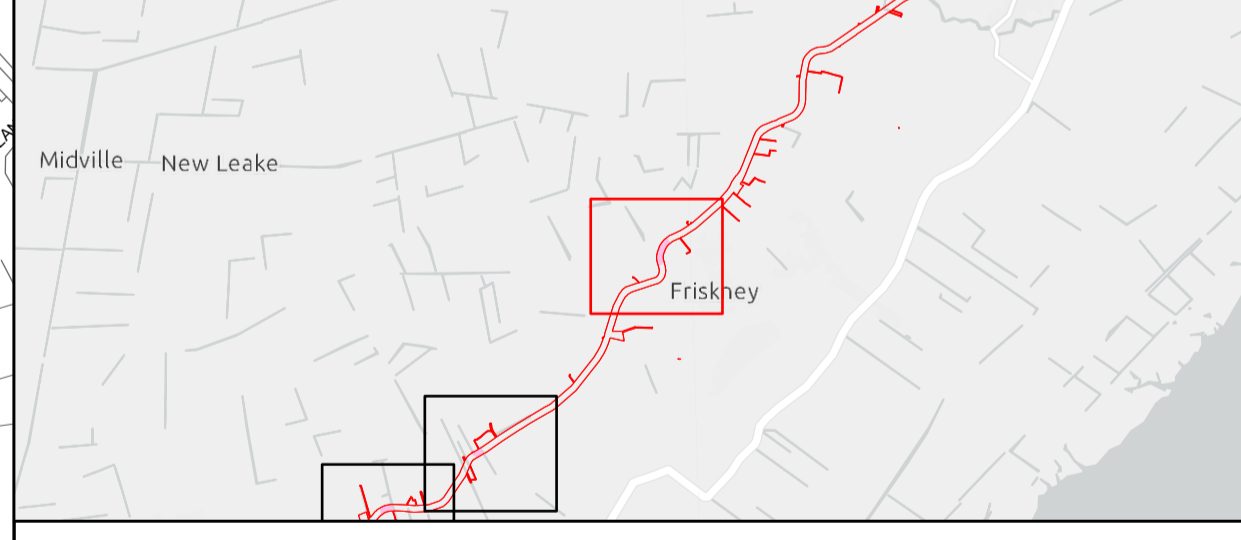
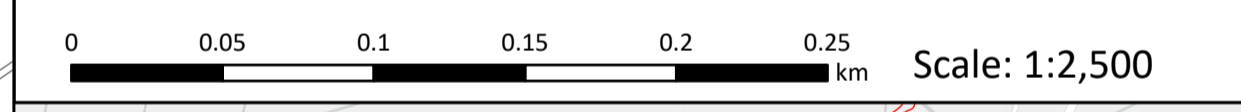


- Legend**
- Order Limits
 - The King's Most Excellent Majesty In Right Of His Crown

Source:
 Contains Esri Community Maps Contributors, Esri UK, Esri, TomTom, Garmin, Foursquare, GeoTechnologies, Inc, METI/NASA, USGS, Esri UK, Esri, TomTom, Garmin, Foursquare, GeoTechnologies, Inc, METI/NASA, USGS.
 Based upon the Ordnance Survey Map with the sanction of the controller of HM Stationery Office. Crown Copyright Reserved. © OS Licence No. 0100031673

Notes:	Status: Pre-examination Update
---------------	--

Onshore Coordinate System
 Datum: OSGB 1936
 Spheroid: Airy 1830
 Projection: British National Grid
 Central Meridian: 2 W
 Vertical Reference: Newlyn



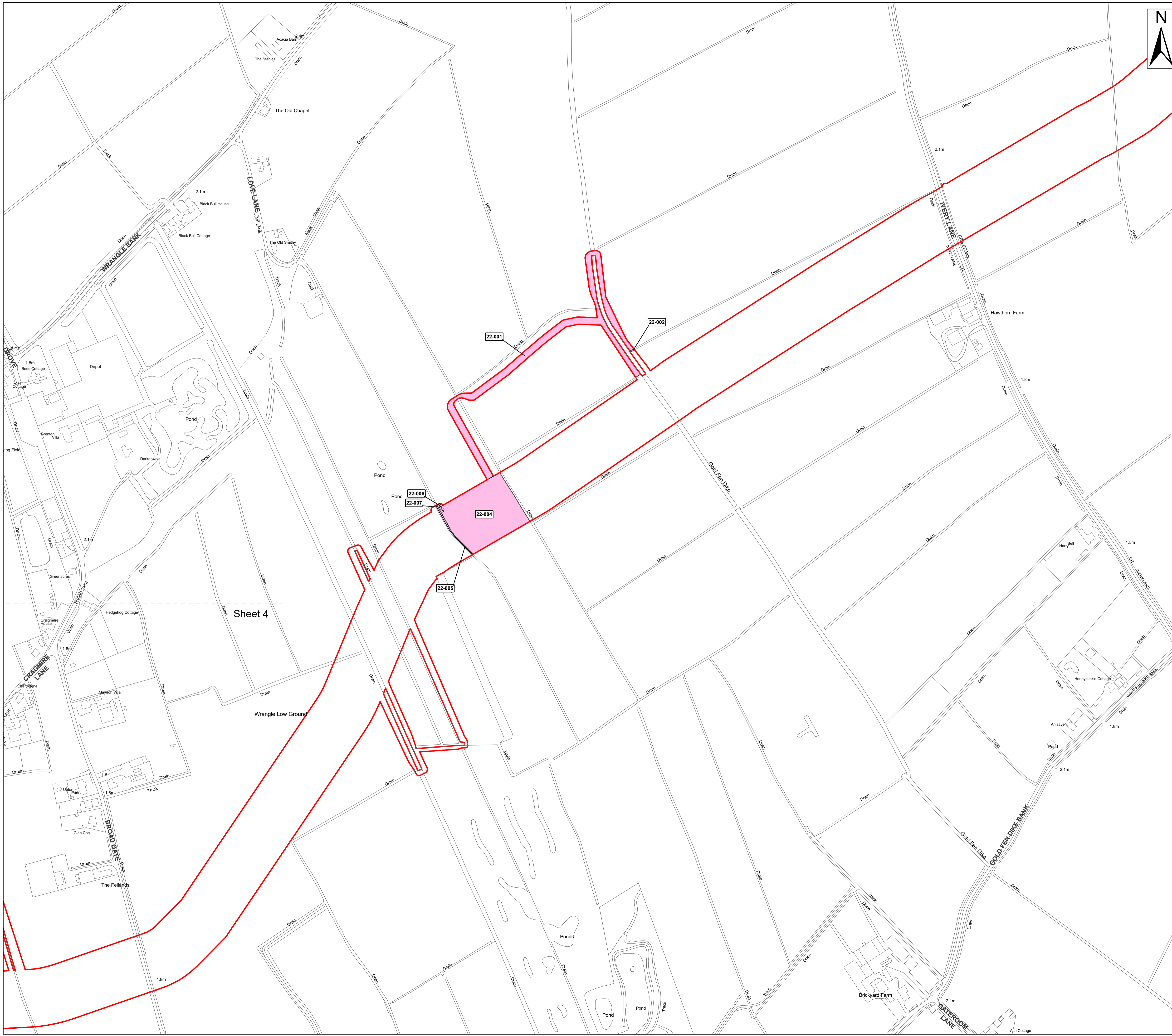
**Outer Dowsing Offshore Wind
 2.6 Crown Land Plans Onshore V2
 DCO Application**

Drawing No: PP1-ODOW-DEV-CS-MAP-0006_02

Drawing: 2 of 11			Page Size: A1		
Rev No:	Date	Description	Drawn	Checked	Approved
1.0	March 2024	DCO Application Version	RT	DM/ODOW	ODOW
2.0	July 2024	Response to Section 51 Advice	RT	DM/ODOW	ODOW



This document may only be used for the purpose for which it was commissioned and in accordance with the terms of engagement for that commission. Unauthorised use of this document in any form whatsoever is prohibited.

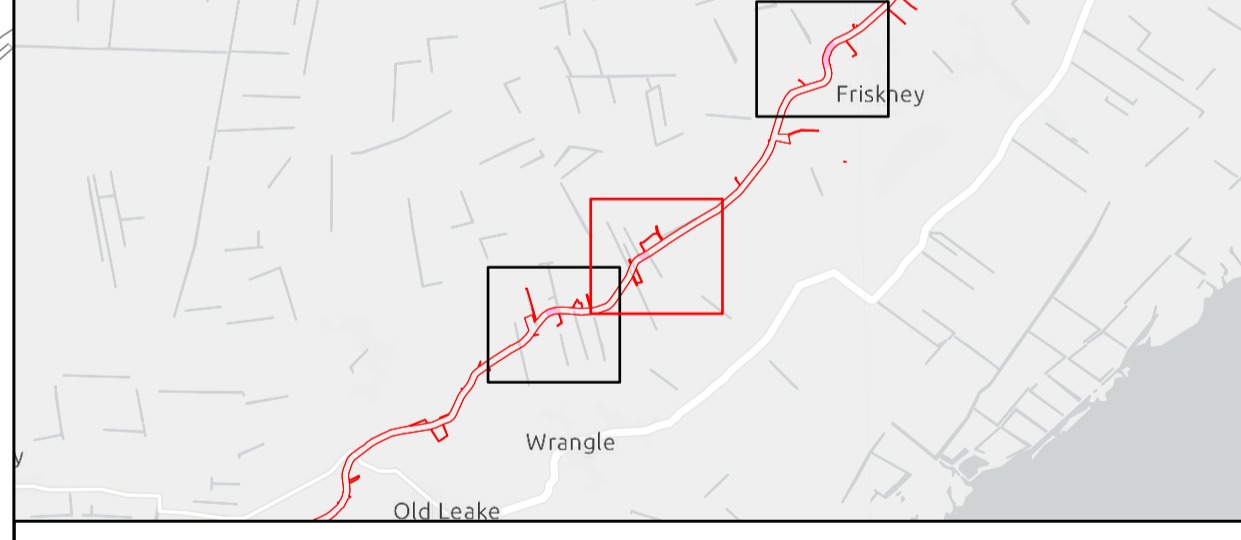
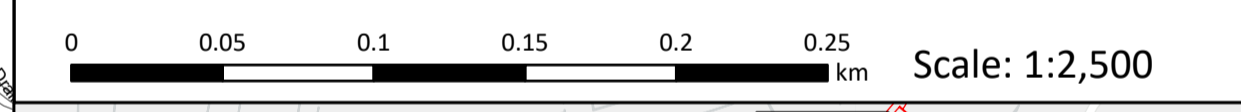


- Legend**
- Order Limits
 - The King's Most Excellent Majesty In Right Of His Crown

Source:
 Contains Esri Community Maps Contributors, Esri UK, Esri, TomTom, Garmin, Foursquare, GeoTechnologies, Inc, METI/NASA, USGS, Esri UK, Esri, TomTom, Garmin, Foursquare, GeoTechnologies, Inc, METI/NASA, USGS.
 Based upon the Ordnance Survey Map with the sanction of the controller of HM Stationery Office. Crown Copyright Reserved. © OS Licence No. 0100031673

Notes:	Status: Pre-examination Update
---------------	--

Onshore Coordinate System
 Datum: OSGB 1936
 Spheroid: Airy 1830
 Projection: British National Grid
 Central Meridian: 2 W
 Vertical Reference: Newlyn



Outer Dowsing Offshore Wind 2.6 Crown Land Plans Onshore V2 DCO Application

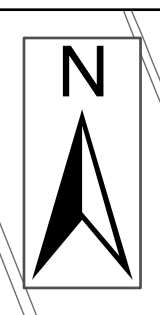
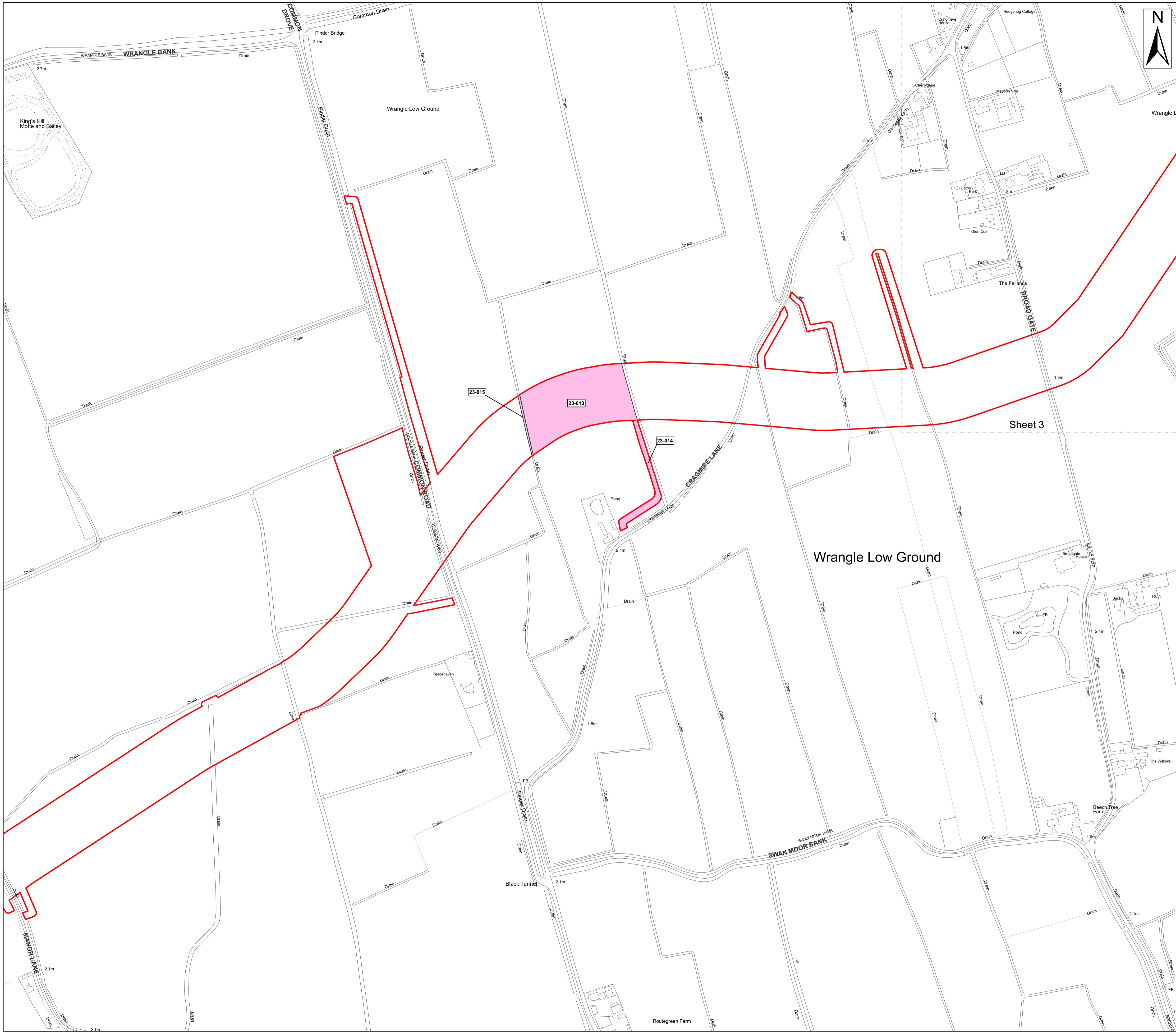
Drawing No: PP1-ODOW-DEV-CS-MAP-0006_02

Drawing: 3 of 11 Page Size: A1

Rev No:	Date	Description	Drawn	Checked	Approved
1.0	March 2024	DCO Application Version	RT	DM/ODOW	ODOW
2.0	July 2024	Response to Section 51 Advice	RT	DM/ODOW	ODOW



This document may only be used for the purpose for which it was commissioned and in accordance with the terms of engagement for that commission. Unauthorised use of this document in any form whatsoever is prohibited.

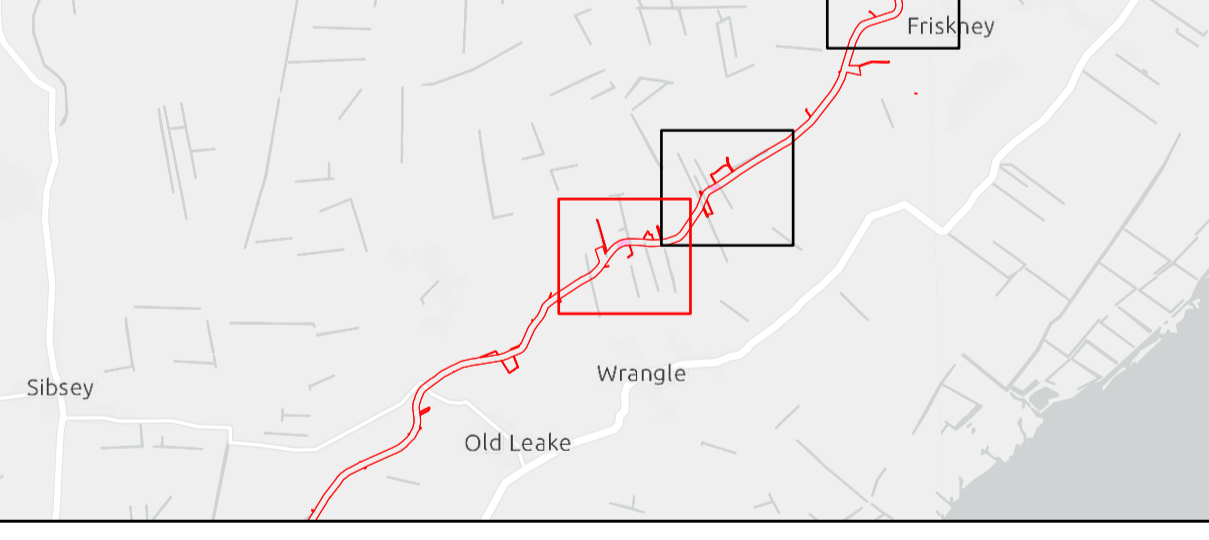
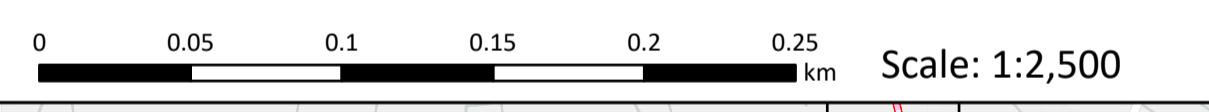


- Legend**
- Order Limits
 - The King's Most Excellent Majesty In Right Of His Crown

Source:
 Contains Esri Community Maps Contributors, Esri UK, Esri, TomTom, Garmin, Foursquare, GeoTechnologies, Inc, METI/NASA, USGS, Esri UK, Esri, TomTom, Garmin, Foursquare, GeoTechnologies, Inc, METI/NASA, USGS.
 Based upon the Ordnance Survey Map with the sanction of the controller of HM Stationery Office. Crown Copyright Reserved. © OS Licence No. 0100031673

Notes:	Status: Pre-examination Update
--------	-----------------------------------

Onshore Coordinate System
 Datum: OSGB 1936
 Spheroid: Airy 1830
 Projection: British National Grid
 Central Meridian: 2 W
 Vertical Reference: Newlyn



Outer Dowsing Offshore Wind 2.6 Crown Land Plans Onshore V2 DCO Application

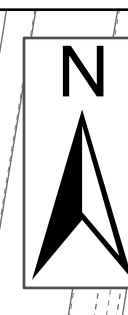
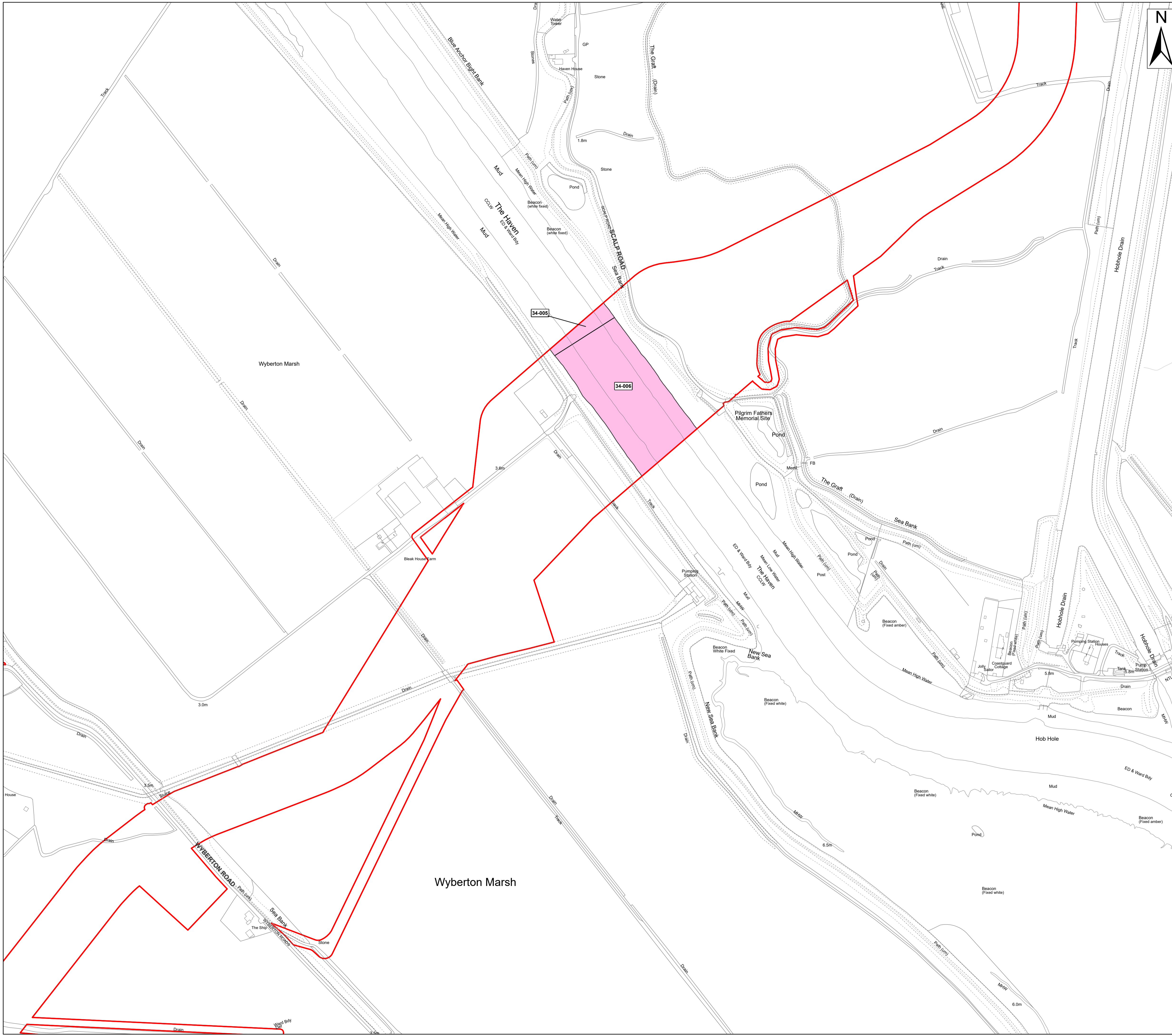
Drawing No: PP1-ODOW-DEV-CS-MAP-0006_02

Drawing: 4 of 11 Page Size: A1

Rev No:	Date	Description	Drawn	Checked	Approved
1.0	March 2024	DCO Application Version	RT	DM/ODOW	ODOW
2.0	July 2024	Response to Section 51 Advice	RT	DM/ODOW	ODOW



This document may only be used for the purpose for which it was commissioned and in accordance with the terms of engagement for that commission. Unauthorised use of this document in any form whatsoever is prohibited.

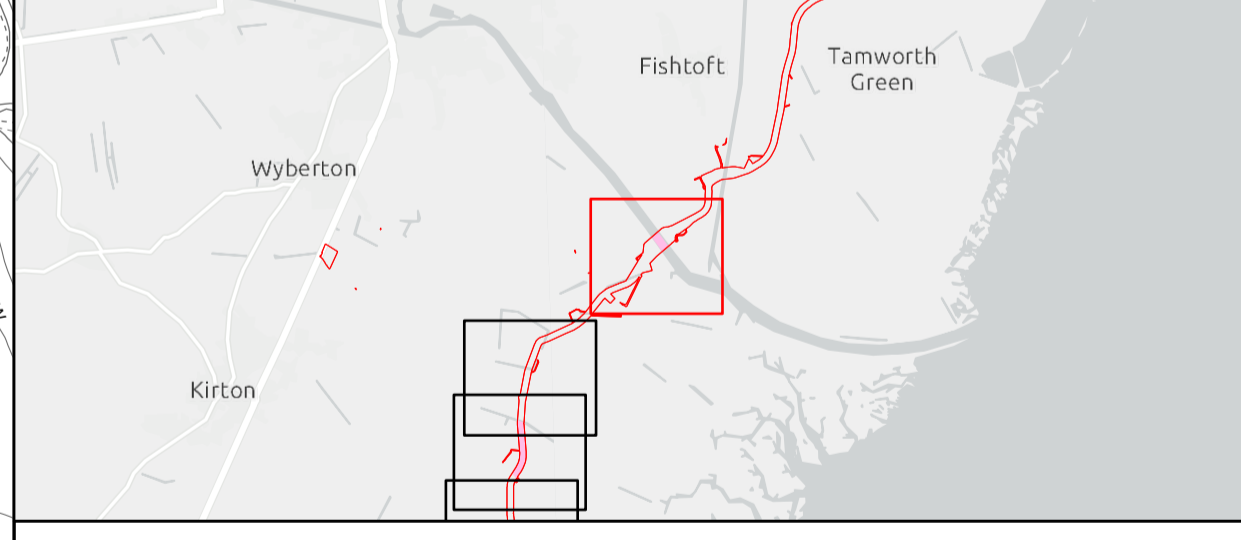
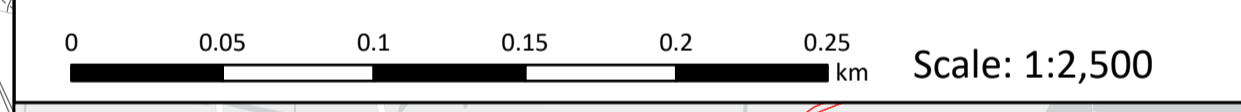


- Legend**
- Order Limits
 - The King's Most Excellent Majesty In Right Of His Crown

Source:
 Contains Esri Community Maps Contributors, Esri UK, Esri, TomTom, Garmin, Foursquare, GeoTechnologies, Inc, METI/NASA, USGS, Esri UK, Esri, TomTom, Garmin, Foursquare, GeoTechnologies, Inc, METI/NASA, USGS.
 Based upon the Ordnance Survey Map with the sanction of the controller of HM Stationery Office. Crown Copyright Reserved. © OS Licence No. 0100031673

Notes:	Status: Pre-examination Update
---------------	--

Onshore Coordinate System
 Datum: OSGB 1936
 Spheroid: Airy 1830
 Projection: British National Grid
 Central Meridian: 2 W
 Vertical Reference: Newlyn



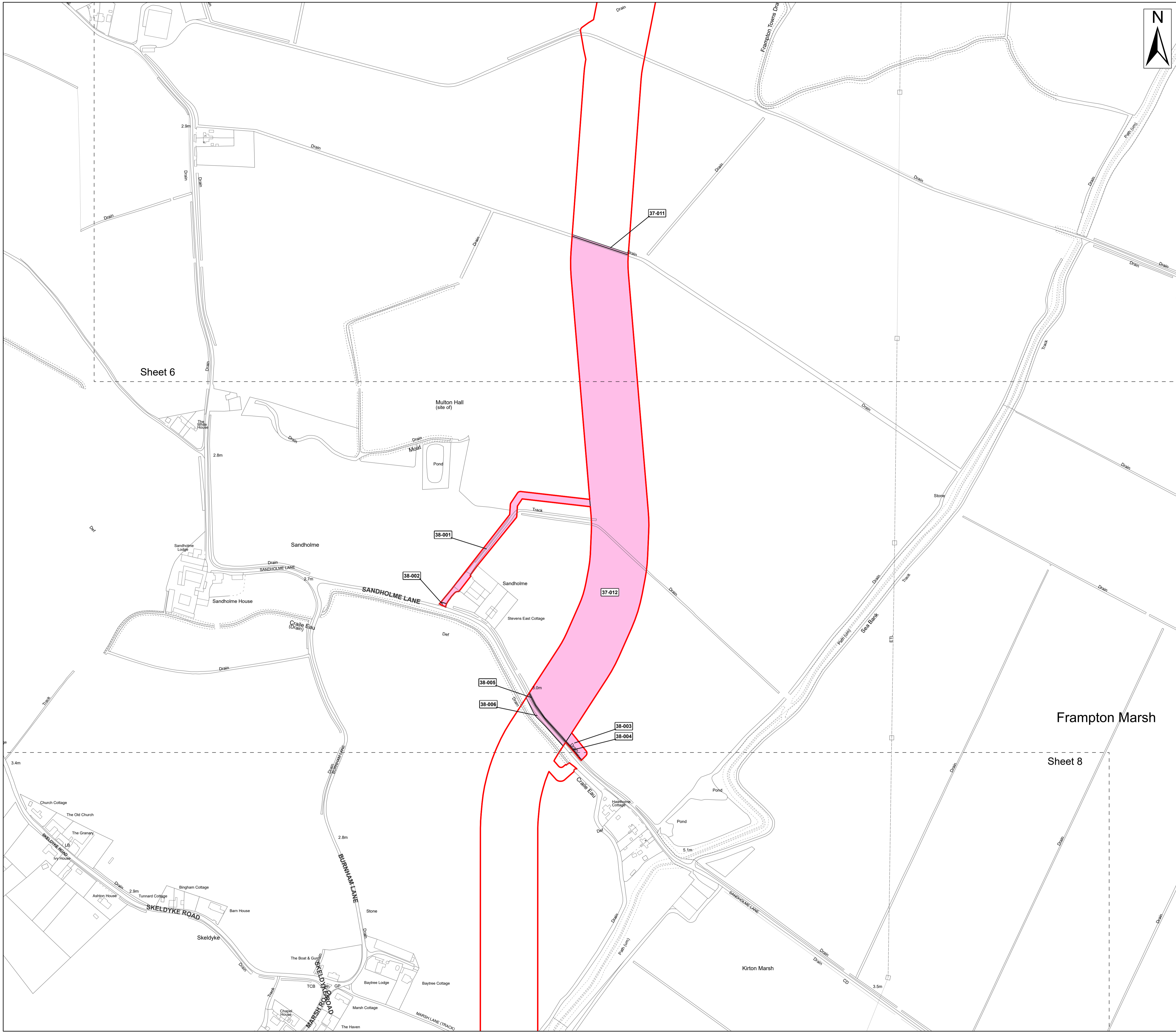
Outer Dowsing Offshore Wind 2.6 Crown Land Plans Onshore V2 DCO Application

Drawing No: PP1-ODOW-DEV-CS-MAP-0006_02

Drawing: 5 of 11			Page Size: A1		
Rev No:	Date	Description	Drawn	Checked	Approved
1.0	March 2024	DCO Application Version	RT	DM/ODOW	ODOW
2.0	July 2024	Response to Section 51 Advice	RT	DM/ODOW	ODOW



This document may only be used for the purpose for which it was commissioned and in accordance with the terms of engagement for that commission. Unauthorised use of this document in any form whatsoever is prohibited.



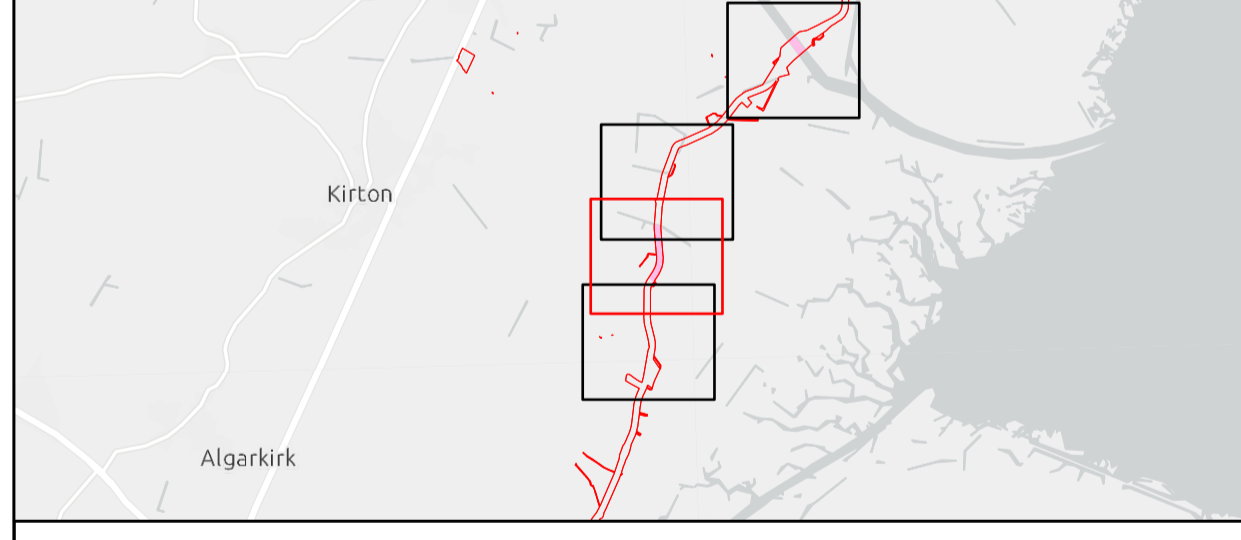
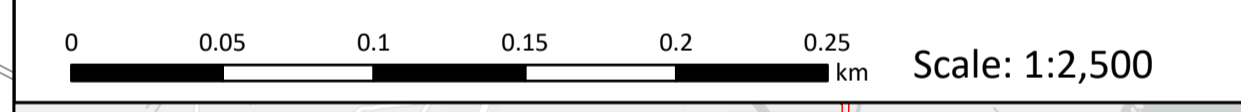
Legend
 Order Limits
 The King's Most Excellent Majesty In Right Of His Crown

Source:
 Contains Esri Community Maps Contributors, Esri UK, Esri, TomTom, Garmin, Foursquare, GeoTechnologies, Inc, METI/NASA, USGS, Esri UK, Esri, TomTom, Garmin, Foursquare, GeoTechnologies, Inc, METI/NASA, USGS.
 Based upon the Ordnance Survey Map with the sanction of the controller of HM Stationery Office. Crown Copyright Reserved. © OS Licence No. 0100031673

Notes:

	Status: Pre-examination Update
--	--

Onshore Coordinate System
 Datum: OSGB 1936
 Spheroid: Airy 1830
 Projection: British National Grid
 Central Meridian: 2 W
 Vertical Reference: Newlyn



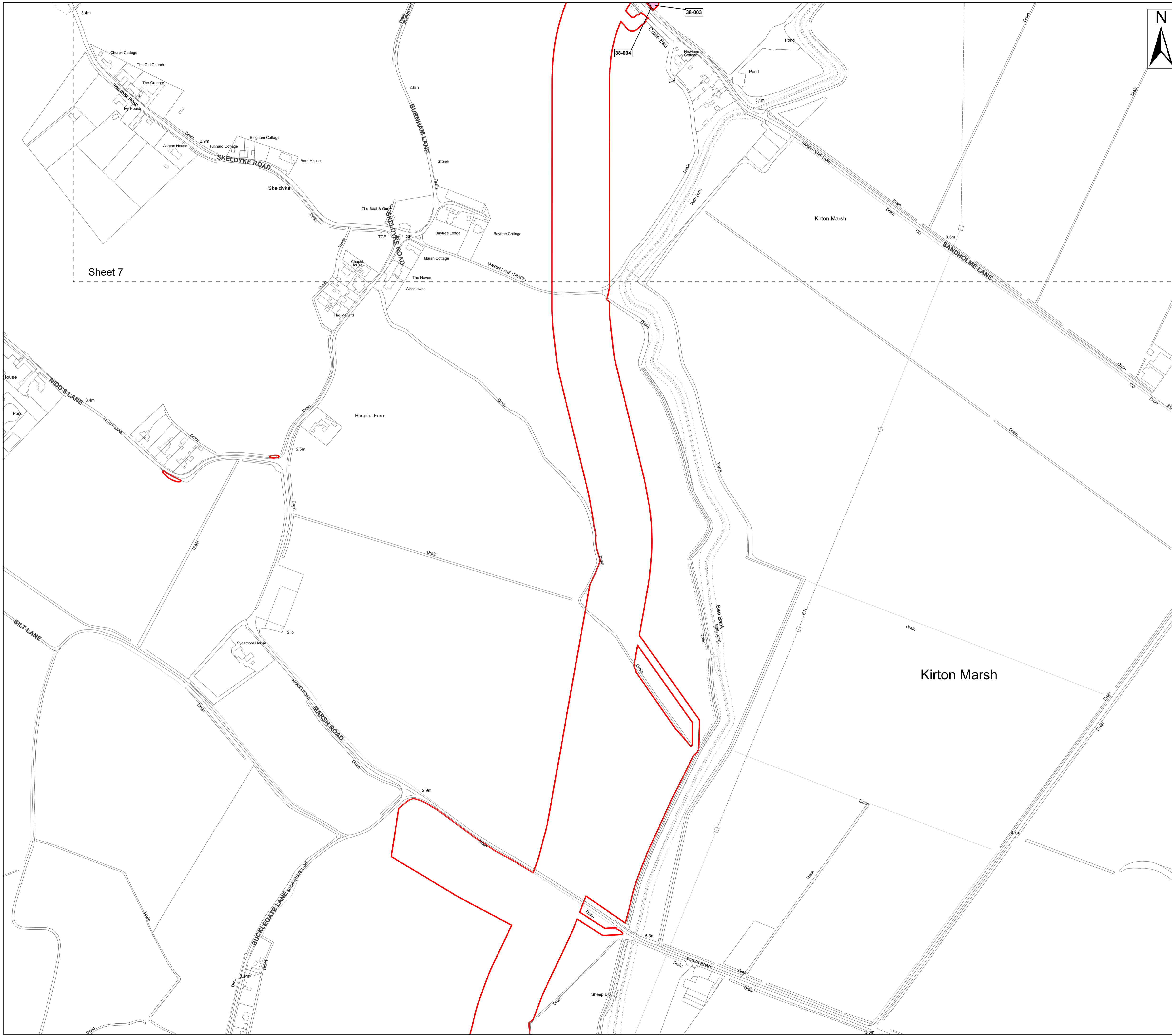
Outer Dowsing Offshore Wind 2.6 Crown Land Plans Onshore V2 DCO Application

Drawing No: PP1-ODOW-DEV-CS-MAP-0006_02

Drawing: 7 of 11			Page Size: A1		
Rev No:	Date	Description	Drawn	Checked	Approved
1.0	March 2024	DCO Application Version	RT	DM/ODOW	ODOW
2.0	July 2024	Response to Section 51 Advice	RT	DM/ODOW	ODOW



This document may only be used for the purpose for which it was commissioned and in accordance with the terms of engagement for that commission. Unauthorised use of this document in any form whatsoever is prohibited.



Sheet 7



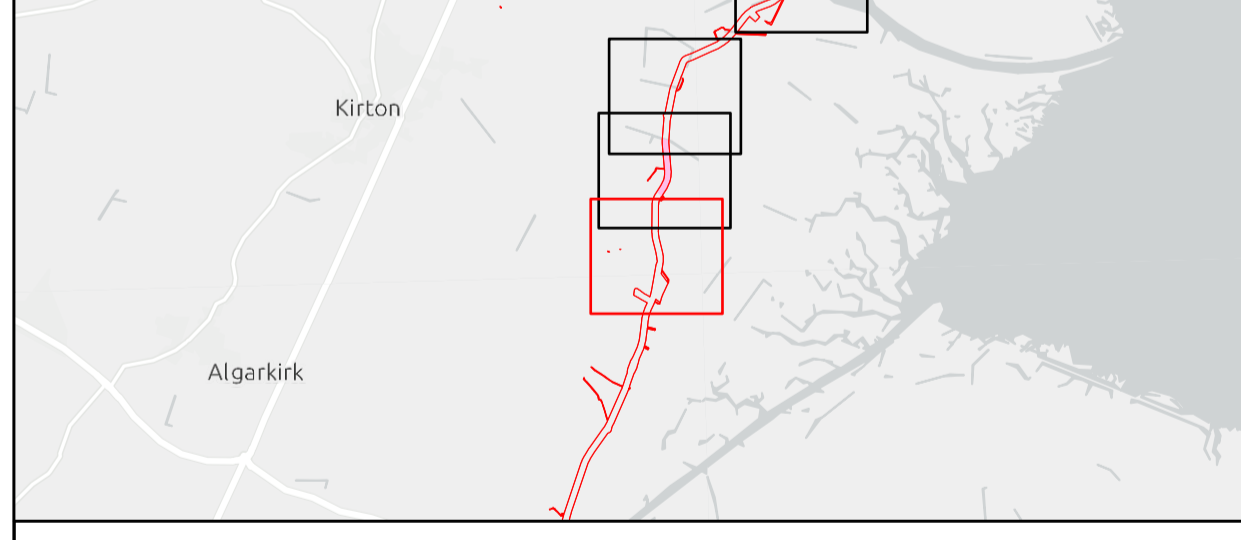
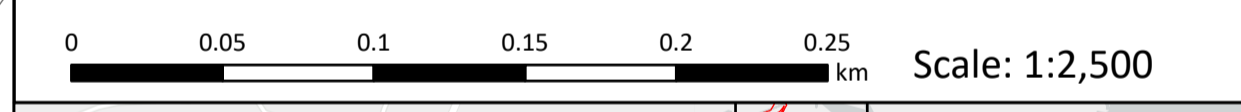
Legend

- Order Limits
- The King's Most Excellent Majesty In Right Of His Crown

Source:
 Contains Esri Community Maps Contributors, Esri UK, Esri, TomTom, Garmin, Foursquare, GeoTechnologies, Inc, METI/NASA, USGS, Esri UK, Esri, TomTom, Garmin, Foursquare, GeoTechnologies, Inc, METI/NASA, USGS.
 Based upon the Ordnance Survey Map with the sanction of the controller of HM Stationery Office. Crown Copyright Reserved. © OS Licence No. 0100031673

Notes:	Status: Pre-examination Update
---------------	--

Onshore Coordinate System
 Datum: OSGB 1936
 Spheroid: Airy 1830
 Projection: British National Grid
 Central Meridian: 2 W
 Vertical Reference: Newlyn



Outer Dowsing Offshore Wind 2.6 Crown Land Plans Onshore V2 DCO Application

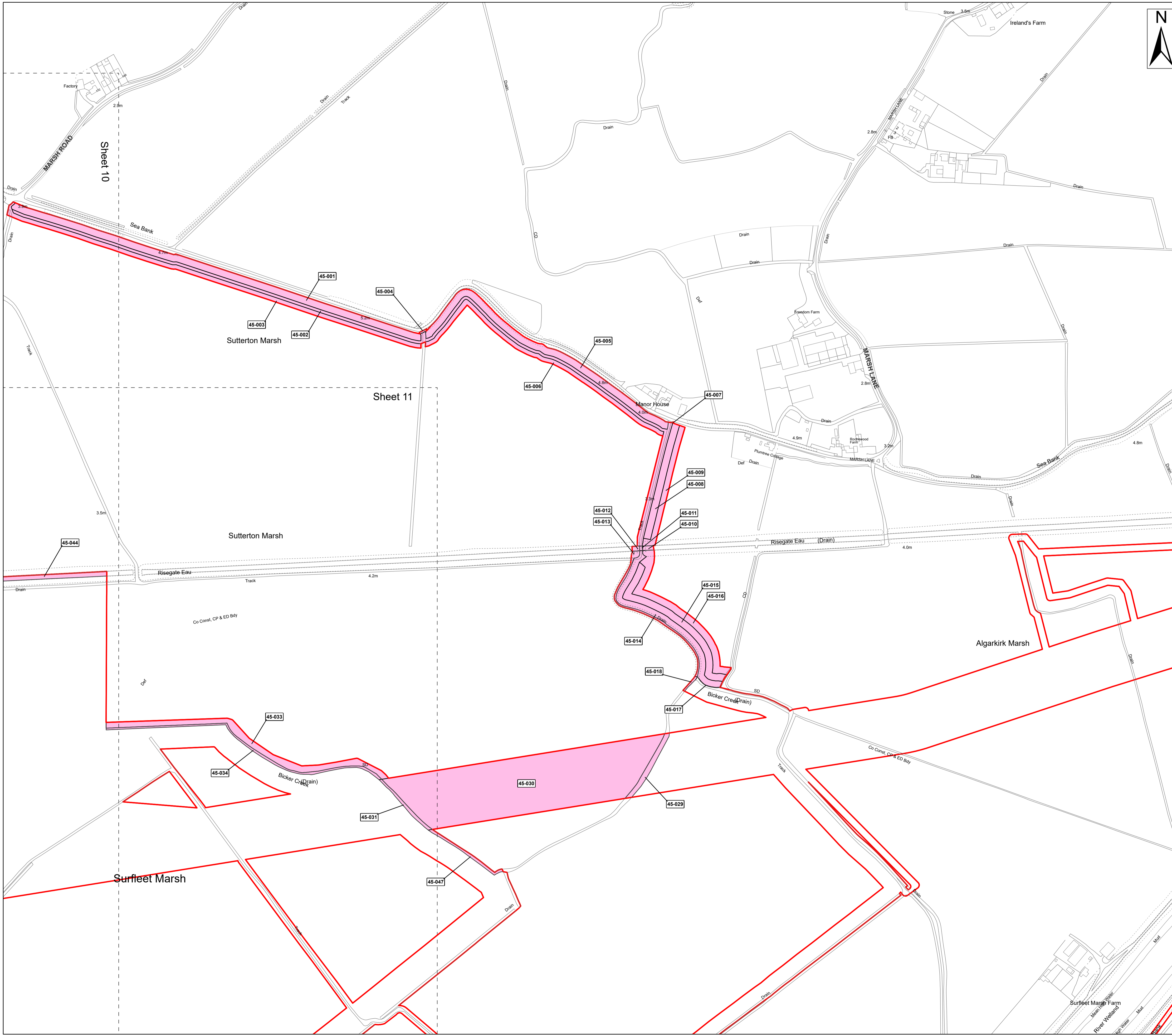
Drawing No: PP1-ODOW-DEV-CS-MAP-0006_02

Drawing: 8 of 11 Page Size: A1

Rev No:	Date	Description	Drawn	Checked	Approved
1.0	March 2024	DCO Application Version	RT	DM/ODOW	ODOW
2.0	July 2024	Response to Section 51 Advice	RT	DM/ODOW	ODOW



This document may only be used for the purpose for which it was commissioned and in accordance with the terms of engagement for that commission. Unauthorised use of this document in any form whatsoever is prohibited.



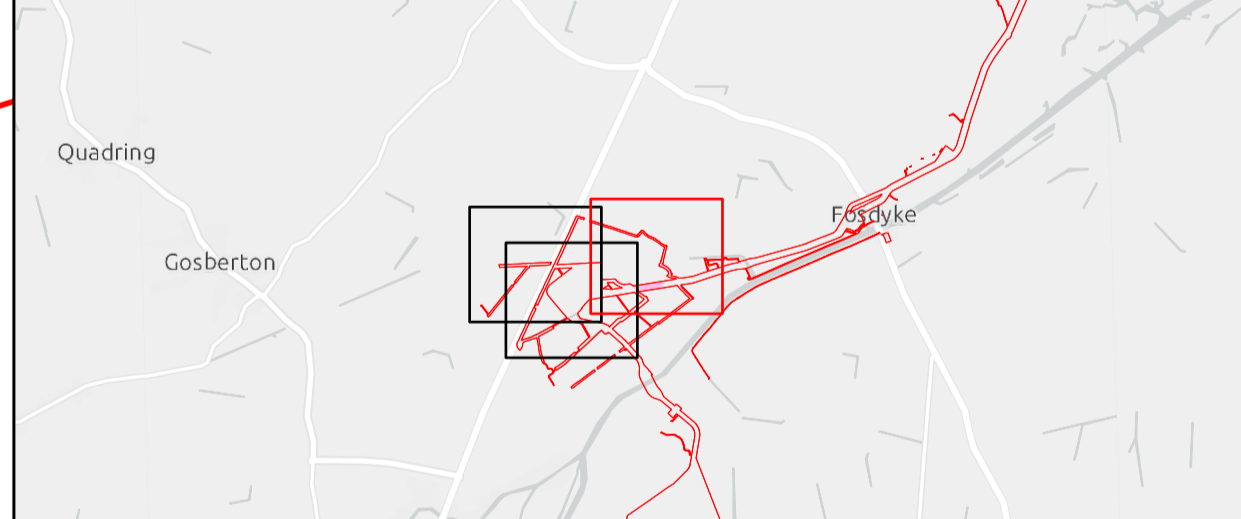
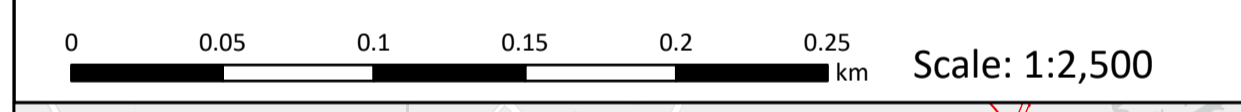
Legend
 Order Limits
 The King's Most Excellent Majesty In Right Of His Crown

Source:
 Contains Esri Community Maps Contributors, Esri UK, Esri, TomTom, Garmin, Foursquare, GeoTechnologies, Inc, METI/NASA, USGS, Esri UK, Esri, TomTom, Garmin, Foursquare, GeoTechnologies, Inc, METI/NASA, USGS.
 Based upon the Ordnance Survey Map with the sanction of the controller of HM Stationery Office. Crown Copyright Reserved. © OS Licence No. 0100031673

Notes:

	Status: Pre-examination Update
--	--

Onshore Coordinate System
 Datum: OSGB 1936
 Spheroid: Airy 1830
 Projection: British National Grid
 Central Meridian: 2 W
 Vertical Reference: Newlyn



Outer Dowsing Offshore Wind 2.6 Crown Land Plans Onshore V2 DCO Application

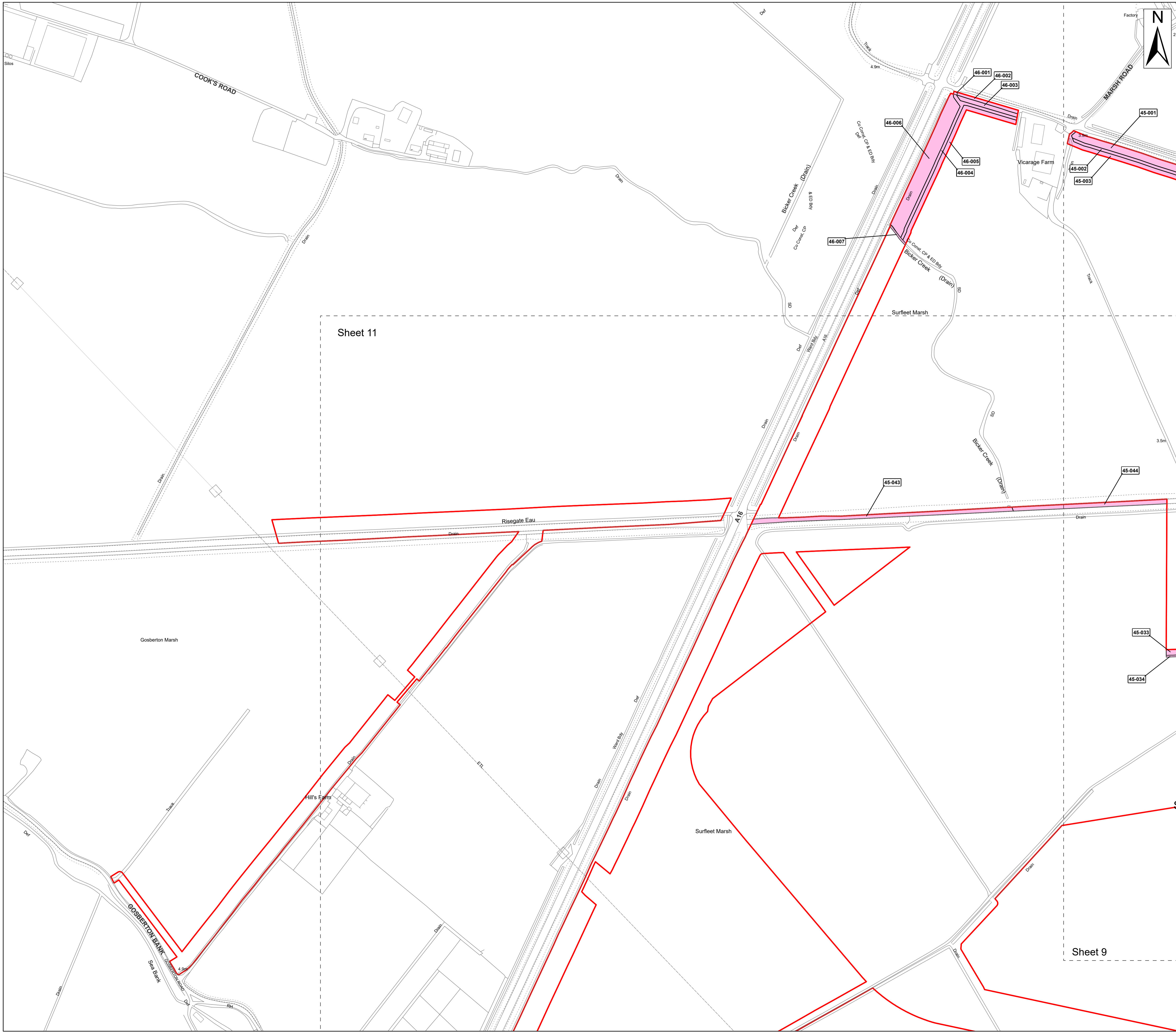
Drawing No: PP1-ODOW-DEV-CS-MAP-0006_02

Drawing: 9 of 11 Page Size: A1

Rev No:	Date	Description	Drawn	Checked	Approved
1.0	March 2024	DCO Application Version	RT	DM/ODOW	ODOW
2.0	July 2024	Response to Section 51 Advice	RT	DM/ODOW	ODOW



This document may only be used for the purpose for which it was commissioned and in accordance with the terms of engagement for that commission. Unauthorised use of this document in any form whatsoever is prohibited.



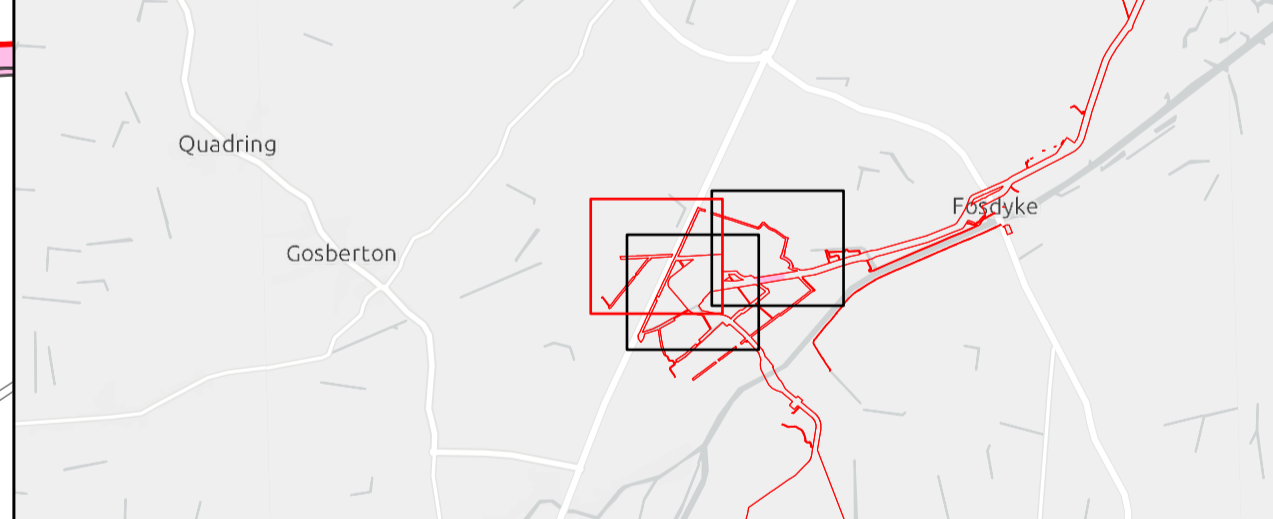
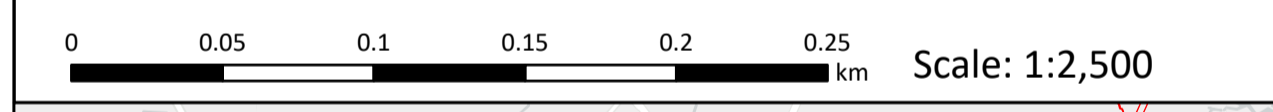
Legend

- Order Limits
- The King's Most Excellent Majesty In Right Of His Crown

Source:
 Contains Esri Community Maps Contributors, Esri UK, Esri, TomTom, Garmin, Foursquare, GeoTechnologies, Inc, METI/NASA, USGS, Esri UK, Esri, TomTom, Garmin, Foursquare, GeoTechnologies, Inc, METI/NASA, USGS.
 Based upon the Ordnance Survey Map with the sanction of the controller of HM Stationery Office. Crown Copyright Reserved. © OS Licence No. 0100031673

Notes:	Status: Pre-examination Update
--------	-----------------------------------

Onshore Coordinate System
 Datum: OSGB 1936
 Spheroid: Airy 1830
 Projection: British National Grid
 Central Meridian: 2 W
 Vertical Reference: Newlyn



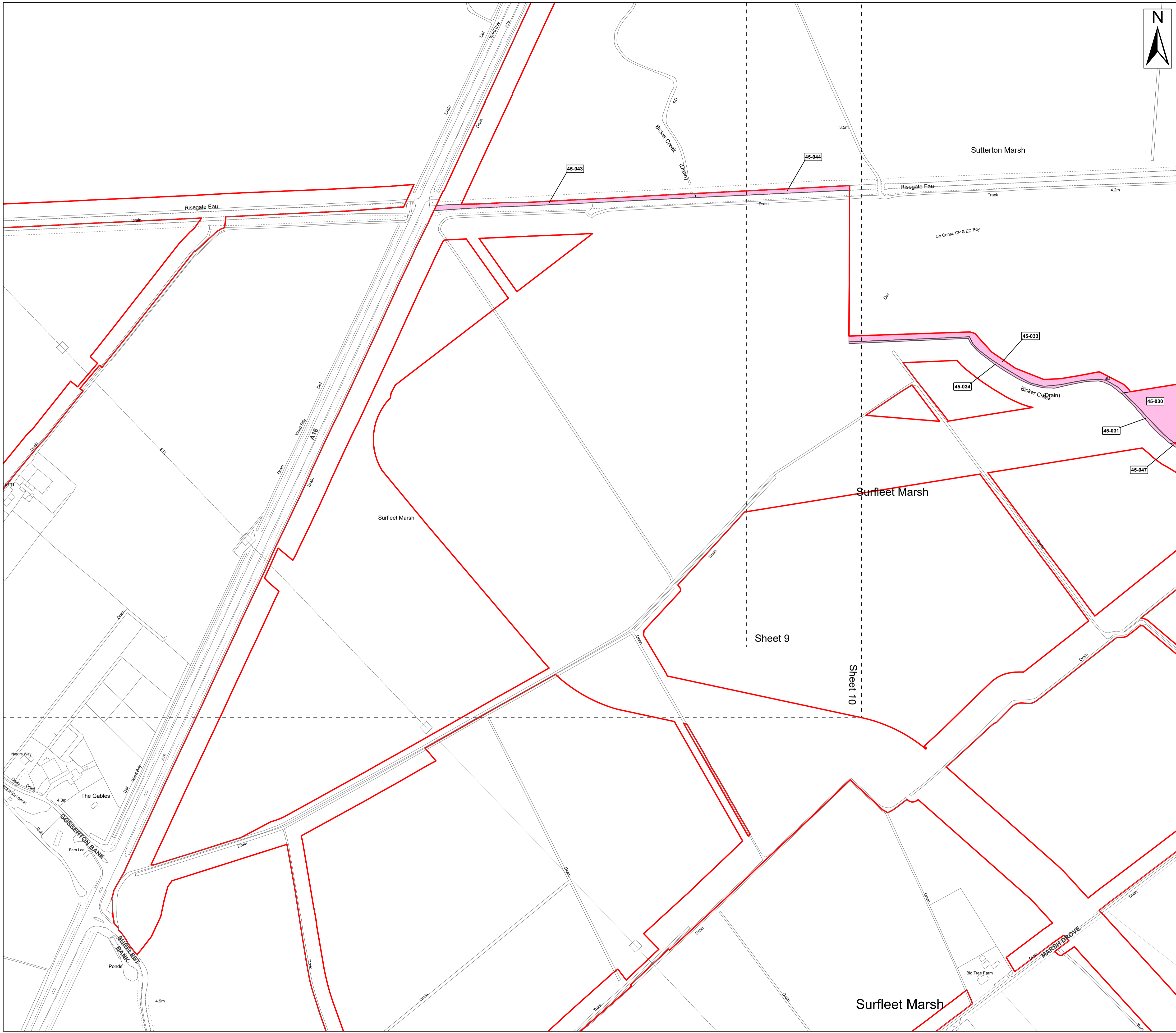
Outer Dowsing Offshore Wind 2.6 Crown Land Plans Onshore V2 DCO Application

Drawing No: PP1-ODOW-DEV-CS-MAP-0006_02

Drawing: 10 of 11			Page Size: A1		
Rev No:	Date	Description	Drawn	Checked	Approved
1.0	March 2024	DCO Application Version	RT	DM/ODOW	ODOW
2.0	July 2024	Response to Section 51 Advice	RT	DM/ODOW	ODOW



This document may only be used for the purpose for which it was commissioned and in accordance with the terms of engagement for that commission. Unauthorised use of this document in any form whatsoever is prohibited.



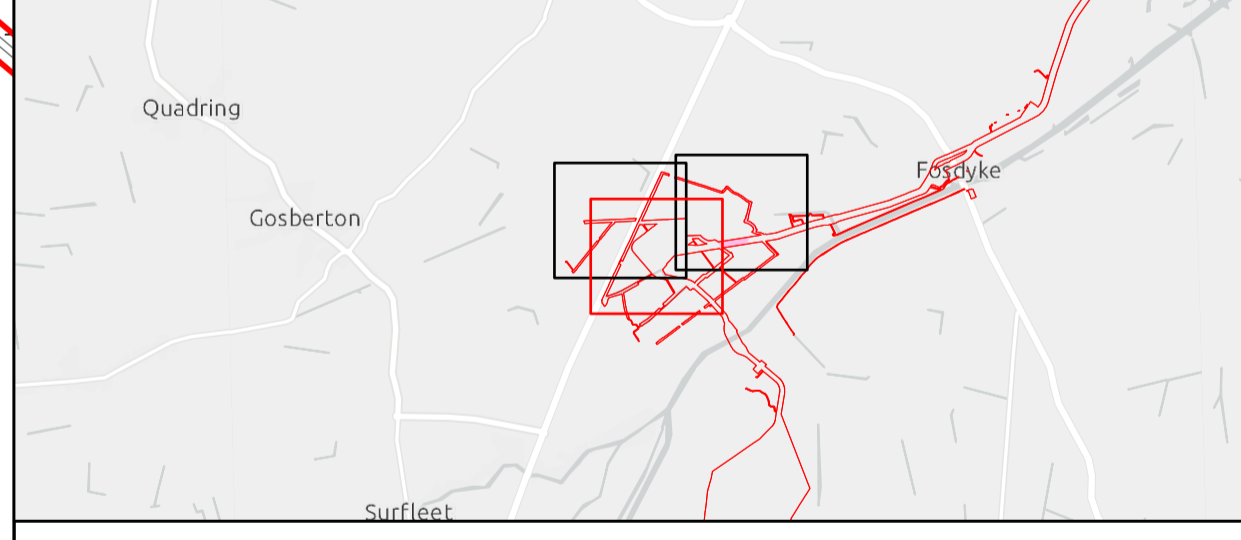
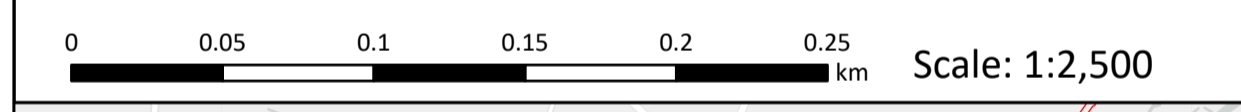
- Legend**
- Order Limits
 - The King's Most Excellent Majesty In Right Of His Crown

Source:
 Contains Esri Community Maps Contributors, Esri UK, Esri, TomTom, Garmin, Foursquare, GeoTechnologies, Inc, METI/NASA, USGS, Esri UK, Esri, TomTom, Garmin, Foursquare, GeoTechnologies, Inc, METI/NASA, USGS.
 Based upon the Ordnance Survey Map with the sanction of the controller of HM Stationery Office. Crown Copyright Reserved. © OS Licence No. 0100031673

Notes:

	Status: Pre-examination Update
--	--------------------------------------

Onshore Coordinate System
 Datum: OSGB 1936
 Spheroid: Airy 1830
 Projection: British National Grid
 Central Meridian: 2 W
 Vertical Reference: Newlyn



Outer Dowsing Offshore Wind 2.6 Crown Land Plans Onshore V2 DCO Application

Drawing No: PP1-ODOW-DEV-CS-MAP-0006_02

Drawing: 11 of 11			Page Size: A1		
Rev No:	Date	Description	Drawn	Checked	Approved
1.0	March 2024	DCO Application Version	RT	DM/ODOW	ODOW
2.0	July 2024	Response to Section 51 Advice	RT	DM/ODOW	ODOW



This document may only be used for the purpose for which it was commissioned and in accordance with the terms of engagement for that commission. Unauthorised use of this document in any form whatsoever is prohibited.